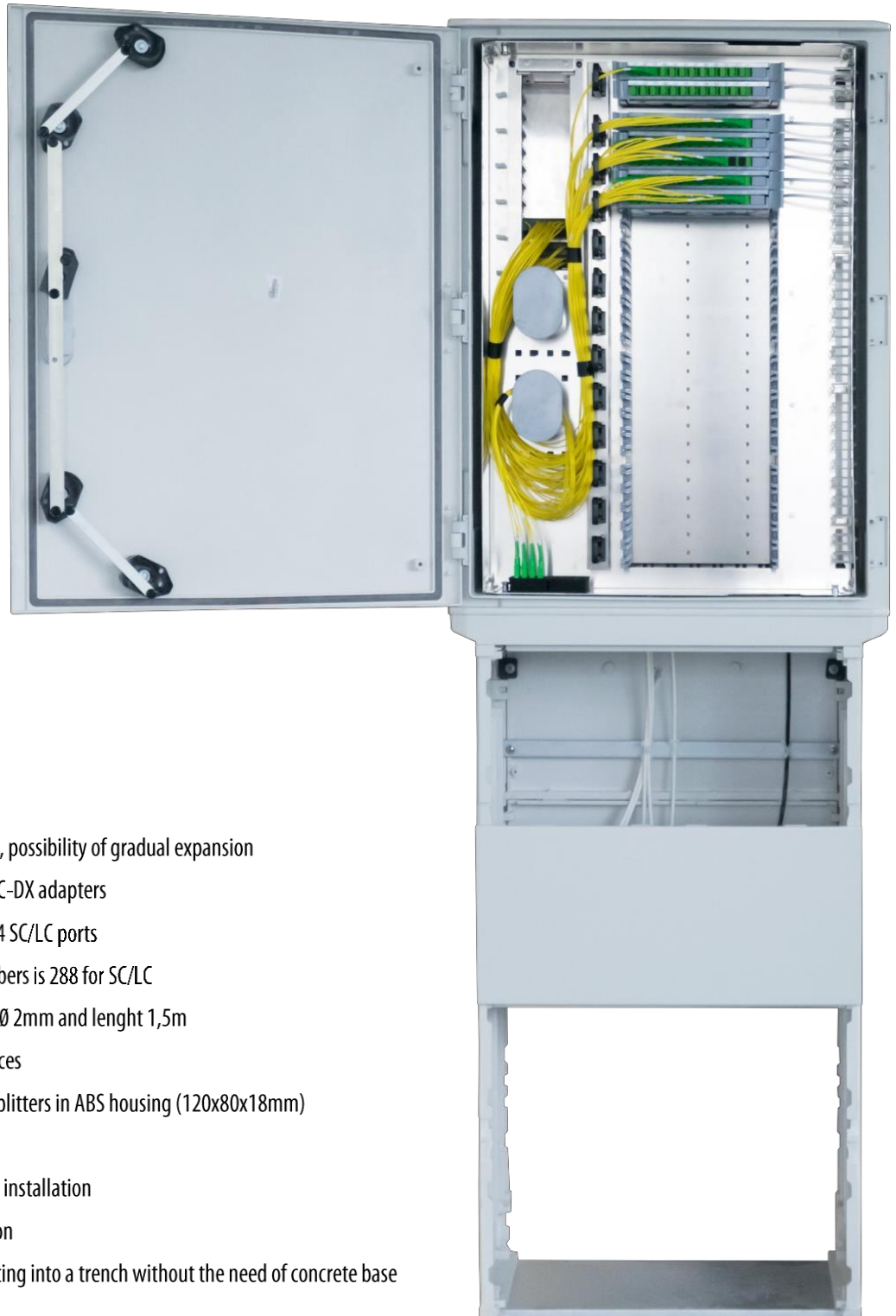


FDH 288

FDH 288 SIS

OPTICAL DISTRIBUTION BOX

Optical distribution box/pillar for PON type optical networks. It allows connection of up to 288 participants in 24 modules with 12 SC adapters. For the backbone cable, there are two additional modules at the top. All the modules can be mounted in a hinged frame. Cabinet includes integrated holder for 11 PLC splitters in ABS housing, management for patchcords and parking element for unused connectors. The cabinet – pillar version is installed in an open area in trench.



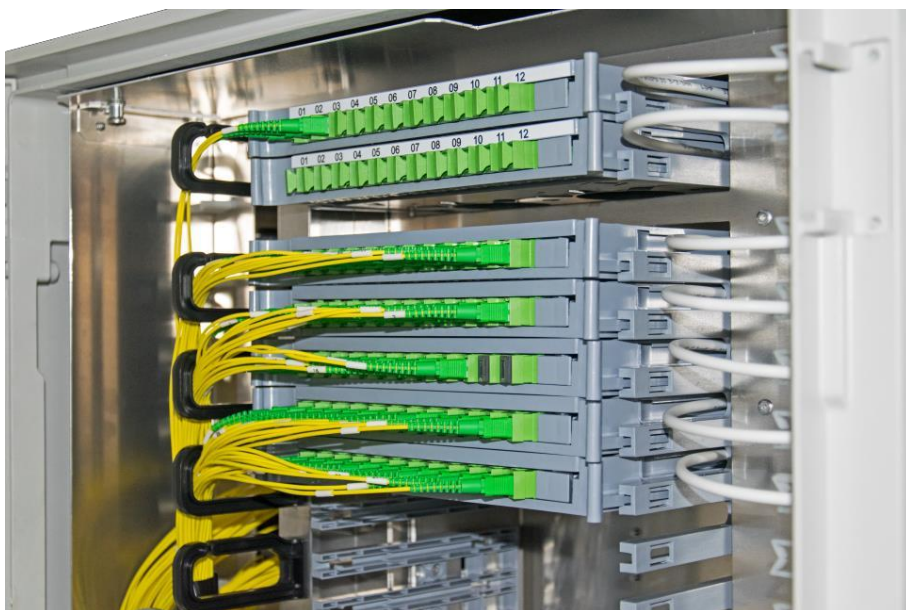
■ Benefits

- Number of modules 26 pieces, possibility of gradual expansion
- Capacity of 12x SC-SX or 12x LC-DX adapters
- Maximum capacity is 288 + 24 SC/LC ports
- Maximum capacity for subscribers is 288 for SC/LC
- Designed for patchcords max. Ø 2mm and length 1,5m
- Maximum capacity of 624 splices
- Integrated holder for 11 PLC splitters in ABS housing (120x80x18mm)
- Patchcord management
- Folding frame for comfortable installation
- Wall, pole and pillar application
- The possibility of direct mounting into a trench without the need of concrete base

FDH 288

FDH 288 SIS

OPTICAL DISTRIBUTION BOX



Order codes

85FD.50/0000F	FDH 288
85FD.00/0000F	FDH 288 SIS
495295	Set of wall brackets
495299	Set of pole brackets
85H2.05/BAL0F	Cable splitter 6x 5/3,5mm
8506.17/0000F	Tube 5/3,5mm 30m
852X.90/000XF	Mounting shelf
85T2.48/0000F	Module empty
On request	Module complete pre-installed, different types
For other variants, please, contact our sales department	

Technical specification

Bushings	6xPG16 with 4x5mm insert; 2xPG16
Coverage degree	IP66 to ČSN EN 60529
Self-extinguishing degree	V0 to UL 94
Impact protection degree	IK 10
Solar radiation	ČSN EN 60068-2-5
Material	Glass reinforced polyester + painting
Color	Light Gray RAL 7035
Dimension	816 x 616 x 323mm / 1800 x 616 x 323mm
Weight	40Kg / 60Kg

ELPAS INTERNATIONAL d.o.o., Ciril Metodova 3, SI-9250 Gornja Radgona, SLOVENIJA,
Tel: +386 2 564 80 40, Fax: +386 2 564 80 41, info@elpas.si, www.elpas.si